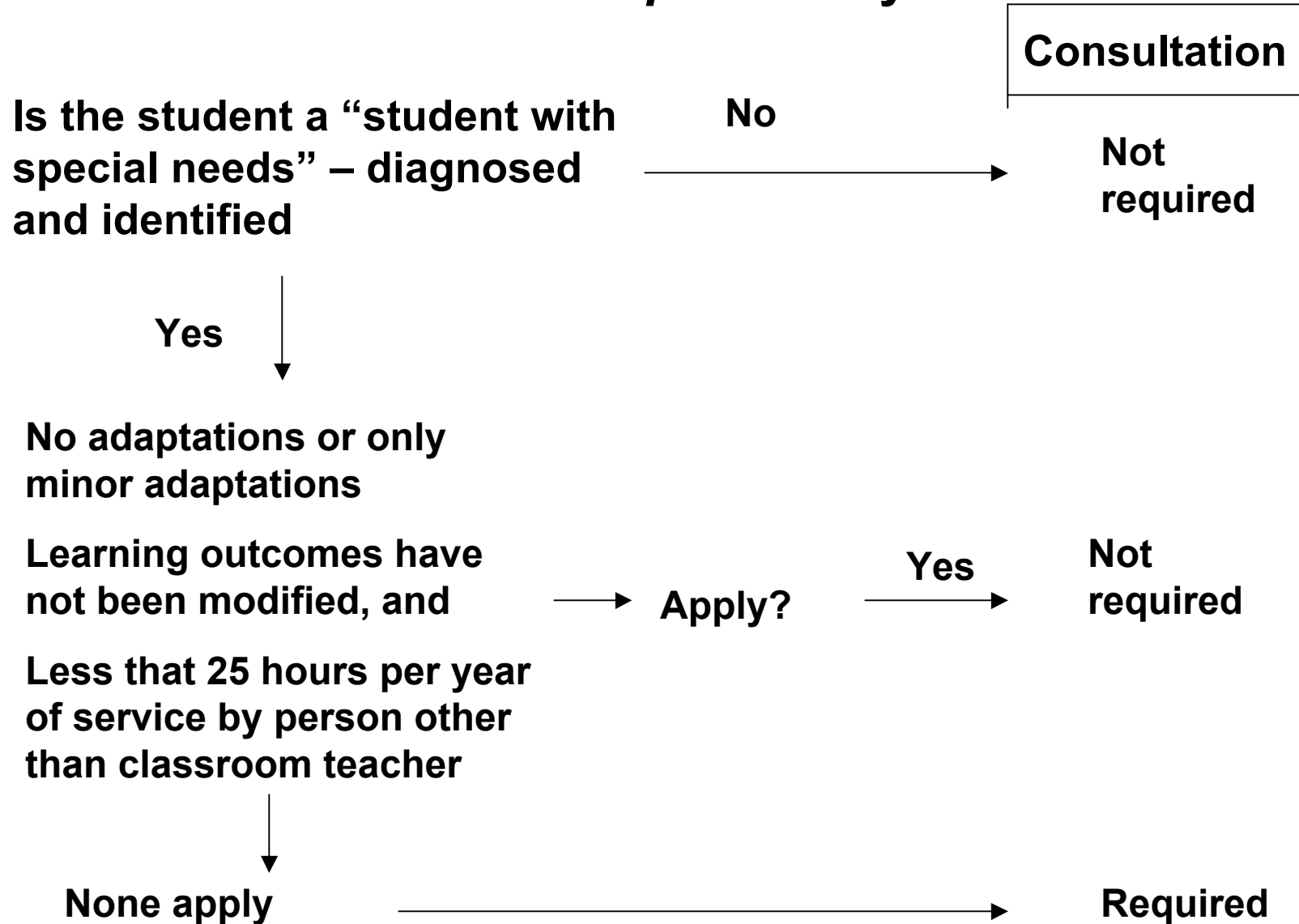


## **When does Bill 33 *require* that you consult?**

- Whenever there are more than 30 students in a class in grades 8 to 12.**
- Whenever there are more than 30 students in a class in grades 4 to 7 for the purpose of seeking consent of the teacher of that class.**
- Whenever there are more than three students with special needs assigned to a class.**
- Whenever one of the conditions above begins to apply during the school year after the board has approved the class organization plan.**

# When does Bill 33 *require* that you consult?



# **What is *consultation*?**

- **Informed – The parties have necessary information to contribute to the quality of a decision.**
- **Open minded – The parties come to the consultation without pre-determined outcomes.**
- **Options – Options are presented for discussion.**
- **Role clarity – The parties know their roles and authorities, and...**

# Bill 33 Implementation Sequence of Events

